




experience the Renault Kiger on www.renault.co.za

Renault Customer Care Direct Line: 0861 RENAULT or 0861 736 2858

Renault South Africa (Pty) Ltd. reserves the right to modify its models without notice, likewise their characteristics, equipment and accessories.

Renault recommends 

5
YEAR WARRANTY
150 000 KM

   www.renault.co.za

Printed April 2023  CUBE DESIGN • 011 454 8160 • 0423 / 6876

RENAULT KIGER

make the mood





excitement beyond ordinary

The Renault Kiger is your pass to new experiences. Its stunning design with a muscular SUV stance complementing your free spirit. The smart interiors bring more convenience to every trip. While the sporty performance gets you in action right from the start. Go ahead, a world of excitement beckons.

key highlights

- tri-octa LED Pure Vision headlamps
- LED DRLs day & night
- 8" display link floating touchscreen
- multi-sense driving modes & rotary command on centre console
- 7" multi-skin drive mode cluster
- wireless smartphone replication
- Premium Audio Sound System (4 speakers + 2 tweeters)
- clean air filter (atmospheric particulate filter)
- automatic air conditioner
- 4 airbags - driver, passenger and 2 side airbags
- total cabin storage of 25.2 litres
- cargo space of 405 litres



Features and images may vary and be optional depending on model, and are subject to change without notice.

stunning wherever you go

As you drive into the unexpected, stand out with the Kiger's eye-catching dual-tone exterior. The car's sculpted design, tri-octa pure vision LED headlamps with LED DRLs and C-shaped signature LED tail lamps are built for stand-out factor. These are enhanced by the chrome front grille, sporty rear spoiler, shark fin antenna and functional roof bars that have you looking great while you go from one experience to another. The Kiger's 16 inch diamond cut alloys, rear skid plate and high ground clearance of 205mm add to its imposing stance.



Tri-octa pure vision LED headlamps with LED DRLs



C-shaped signature LED tail lamps



Diamond cut black alloy wheels



Dual-Tone exterior

Dual-Tone roof applicable to Turbo models only.



Features and images may vary and be optional depending on model, and are subject to change without notice.

super smart interiors

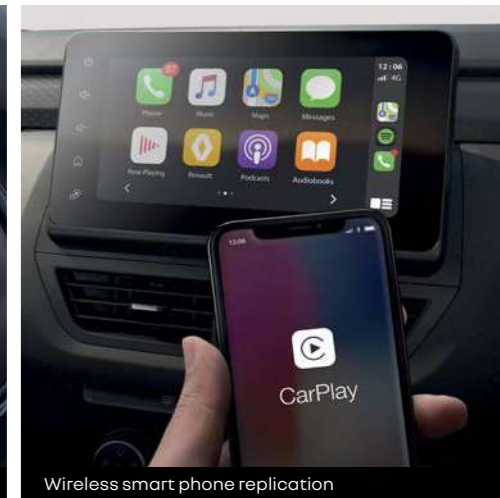
The Renault Kiger's smart interiors are designed to make every trip memorable.

It features Apple CarPlay® and Android Auto™ with wireless* smart phone replication and Premium Audio Sound System for an exciting in-car entertainment experience. Smart technology inside continues in Push Start/Stop, Smart Access Card, rear view camera and Auto AC*.

*On Intens spec.



Digital display on Life and Zen versions



Wireless smart phone replication



Premium Audio Sound System (4 speakers + 2 tweeters)



Push button start and stop



Auto air conditioning



Rear knee room of 222 mm



Cargo space of 405L



Glove boxes volume of 14.9L



60:40 Rear foldown seats

more space for shared experiences

The Renault Kiger's high cabin storage volume has you ready for the new, when you hit the road with your crew.

There's ample space for all your belongings with the 405L boot space that can be enhanced to 879L by folding rear seats. There's also additional storage space of 14.9L in upper and lower glove boxes and 7.5L in the centre console storage compartment.

The Kiger's rear row comes with sizable knee room of 222mm, a flat floor and elbow width of 1 431mm to help comfortably seat three.



Multi-sense drive modes



Steering wheel controls

sporty performance

Go where your curiosity takes you with the Renault Kiger. Zip through different experiences with the new 1.0L Turbo petrol engine. The car gives you the best of both performance and fuel efficiency with multi-sense drive modes that work in tandem with the multi-skin 7 inch reconfigurable TFT cluster.



Intens multi-skin 7" reconfigurable TFT cluster



Reconfigurable TFT display



Features and images may vary and be optional depending on model, and are subject to change without notice.

strong and agile curves

With its distinct athletic design that is bursting with energy, the Renault Kiger combines urban modernity with agility, whichever road it takes. With its muscular bodywork that exudes sturdiness and dynamism the Kiger is a real invitation to escape the urban jungle and experience a new kind of driving.

The Kiger boasts a dynamic silhouette with sleek and taut lines, in contrast with the more muscular and solid lower part. The slender windscreen extends into a floating roof that runs down to a steep sloping rear window, giving the car a coupe style SUV look. The aerodynamic spoiler with cut-outs featured on the roof drop is topped by a shark fin antenna to give the Kiger a very distinctive look.



standard features

LIFE



Exterior Design

- Gloss black outer handles
- Front grill chrome deco 2 lines
- C-shaped signature LED tail lamps

Interior

- Piano Black door panels
- Shiny black door panels
- Steering wheel shiny black
- Rear parcel shelf
- Steering wheel shiny black
- Upholstery: Muted Melange fabric seats

Safety

- Central locking
- Dual Airbags - driver and front passenger
- ABS and EBD
- Seat belt reminder - driver and front passenger
- Impact sensing unlock
- Spare wheel

Comfort and Convenience

- Electric power steering
- Central locking with remote key
- Auto door-lock speed sensing
- Intermittent windscreen wipers
- Rear air-vents
- Power adjustable rearview mirrors
- Tilt adjustable steering wheel
- Rear power windows

Multimedia and Technology

- Digital instrument cluster
- 1 DIN Radio, embedded USB port
- 4 speakers
- 12V Power socket front

Options

- Metallic paint

standard features

ZEN



Zen Turbo model displayed (Black Roof).

Zen = Life +

Exterior Design

- 16" Flex wheels
- Rear silver skid plate
- Dual-Tone (Black Roof) - Turbo model
- Roof rails
- Shark fin antenna

Interior

- Shiny black central console
- Sliding lid on central console storage
- Gear knob base chrome ring
- Leather type + dual stitching gear-box gusset
- Linear Interlock fabric seats

Safety

- 2 front side airbags

Comfort and Convenience

- Rear power windows
- Height adjustable driver's seat
- Rear window wiper + washer
- Upper glove box
- Closed storage with sliding lid
- Driver & Passenger rear seat back pockets
- 2 adjustable headrests + Rear centre armrest
- Vanity mirror on passenger side
- 60/40 rear bench seats (foldable)

Multimedia and Technology

- 8" Touchscreen display, FM/AM tuner, Bluetooth® audio streaming and hands-free calls and vehicle applications
- Smartphone replication with Apple CarPlay® and Android Auto™ by USB
- Steering wheel mounted controls
- Smart Access Card with START/STOP button
- Rear view camera

Options

- Metallic paint

standard features

INTENS



Intens = Zen +

Exterior Design

- 16" Bi-Tone Diamond cut alloys with red centre caps
- Tri-octa pure vision LED headlamps with LED DRLs
- Chrome insert on front fender embellisher
- Dual-Tone (Black Roof) - Turbo model
- Roof bars with 50kg load capacity

Interior

- Steering wheel with artificial leather wrap & red stitching
- Shiny black central console upper cover
- Quilted embossed fabric seat
- Seat trim - Red stitching
- Dashboard panel - Red & Black

Safety

- ESP
- Front side airbags
- Reverse parking camera with guidelines

Multimedia and Technology

- 7" Multi-Skin Drive Mode Cluster
- MULTI-SENSE Driving Modes rotary dial
- Premium Audio Sound System with 4 tweeters
- Wireless smartphone replication

Comfort and Convenience

- Ambient lighting
- Auto air conditioner
- Power folding exterior rearview mirrors
- Rear window defogger
- Front driver anti-pinch power window

Options

- Metallic paint

engines

| ENGINE | 1.0 ENERGY MANUAL | 1.0 ENERGY EASY-R AMT | 1.0 TURBO MANUAL | 1.0 TURBO CVT X-TRONIC |
|--|----------------------------------|----------------------------|------------------|--|
| Fuel | Unleaded | Unleaded | Unleaded | Unleaded |
| Engine type | Multi-point fuel injection | Multi-point fuel injection | Turbo charged | Turbo charged |
| Capacity (cm³) | 999 | 999 | 999 | 999 |
| Number of cylinders/valves | 3/12 | 3/12 | 3/12 | 3/12 |
| Max. power (kW) | 52 | 52 | 74 | 74 |
| Max. power rating (rpm) | 6 200 | 6 200 | 5 000 | 5 000 |
| Peak torque (Nm) | 96 | 96 | 160 | 160 |
| Peak torque rating (rpm) | 3 500 | 3 500 | 3 500 | 3 500 |
| GEARBOX | | | | |
| Type | Manual | Automatic AMT | Manual | X-Tronic CVT |
| Number of gears | 5 | 5 | 5 | 5 |
| BRAKES AND SUSPENSION | | | | |
| Front brakes | | | | Disc |
| Rear brakes | | | | Drum |
| Front suspension | | | | Mac Pherson strut with lower transverse link |
| Rear suspension | | | | Twist beam suspension with coil spring |
| STEERING | | | | |
| Type | Electric power-assisted steering | | | |
| WHEELS AND TYRES | | | | |
| Wheel and tyre size | 195/60 R16 | 195/60 R16 | 195/60 R16 | 195/60 R16 |
| CONSUMPTION AND EMISSIONS* | | | | |
| Urban cycle (L/100 km) | 6.6 | 6.3 | 5.8 | 6.8 |
| Extra Urban cycle (L/100 km) | 4.5 | 4.5 | 4.6 | 4.6 |
| Combined cycle (L/100 km) | 5.3 | 5.2 | 5.0 | 6.0 |
| Emissions CO ₂ mixed cycle (g/km) | 127 | 124 | 120 | 142 |
| Fuel tank capacity (L) | 40 | 40 | 40 | 40 |
| WEIGHT(KG) | | | | |
| Tare weight kg (excluding driver) | 911 | 916 | 982 | 1 008 |
| Gross vehicle mass kg (GVM) | 1 373 | 1 378 | 1 435 | 1 461 |
| Gross front axle mass kg | 695 | 698 | 760 | 779 |
| Gross rear axle mass kg | 678 | 680 | 675 | 782 |
| Gross combined mass kg (GCM) | 1 373 | 1 378 | 1 435 | 1 461 |

* Fuel consumption and CO₂ emissions are certified using a standard, regulated method. It is identical for all manufacturers and allows vehicles to be compared. Fuel consumption in actual usage depends on the vehicle's usage conditions and equipment and the driver's driving style.

equipment & options

| | LIFE | ZEN | INTENS |
|--|-----------------------|-------------------------|---|
| SAFETY AND SECURITY | | | |
| Dual Airbags – driver, front passenger | • | • | • |
| Front side airbags | - | • | • |
| ABS + EBD | • | • | • |
| ESP – Available on Turbo Engine | - | • | • |
| Rear Park Distance Sensors | • | • | • |
| Reverse parking camera with guidelines | - | • | • |
| Seat belt reminder – Driver and front passenger | • | • | • |
| Speed sensing door lock | • | • | • |
| Impact sensing unlock | • | • | • |
| Spare wheel | • | • | • |
| EXTERIOR | | | |
| Metallic paint | ◦ | ◦ | ◦ |
| Dual-Tone Black Roof (Turbo model) | - | • | • |
| Longitudinal roof bars with 50kg load capacity | - | - | • |
| Gloss black door handles | • | • | • |
| Rear silver skid plate | - | - | • |
| Electric exterior rearview mirrors with manual fold | • | • | - |
| Electric exterior rearview mirrors with power fold | - | - | • |
| Ground clearance 205mm | • | • | • |
| Tri-octa Pure Vision LED headlamps with LED DRLs | - | - | • |
| C-shaped signature LED tail lamps | • | • | • |
| LED indicators on outside door mirrors | - | • | • |
| Rear window wiper & washer | - | • | • |
| Wheels | 16" Full wheel covers | 16" Flex wheels | 16" Bi-Tone Diamond cut alloys (with red centre caps) |
| INTERIOR | | | |
| Dual-Tone interior | • | • | • |
| Height adjustable driver's seat | - | • | • |
| Dual glove box | - | • | • |
| Steering wheel gloss black | • | • | - |
| Steering wheel with red stitched artificial leather wrap | - | - | • |
| Digital Instrument cluster | • | • | - |
| Digital 7" Multi-Skins Driver Mode TFT Cluster | - | - | • |
| Ambient interior lighting | - | - | • |
| 60:40 split second row seat | - | • | • |
| Upholstery | Muted Melange fabric | Linear interlock fabric | Quilted emboss fabric |
| Red stitched seat trim | - | - | • |
| High centre console with armrest | • | • | • |
| Rear parcel shelf | • | • | • |

Standard · Not Available - Optional ◦

Features and images may vary and be optional depending on model, and are subject to change without notice.

equipment & options

| | LIFE | ZEN | INTENS |
|---|------|-----|--------|
| COMFORT | | | |
| Electric power steering | • | • | • |
| Front power windows | • | • | • |
| Driver anti-pinch power windows | - | - | • |
| Rear power windows | - | • | • |
| Manual air conditioning with heater | • | • | - |
| Automatic air conditioning | - | - | • |
| Rear air conditioning vents | • | • | • |
| One Touch up driver's powered window | - | - | • |
| Multi-Sense rotary controlled driving modes with ECO driving | - | - | • |
| Upper glove box | - | • | • |
| Cooled lower glove box | - | - | • |
| Closed centre console storage with sliding lid | - | • | • |
| Front seat back pockets – driver and passenger side | - | • | • |
| Vanity mirror on passenger side | - | • | • |
| Rear window defogger | - | - | • |
| MULTIMEDIA AND SMART TECHNOLOGY | | | |
| 8" Touchscreen display, FM/AM tuner, Bluetooth® audio streaming and hands-free calls and vehicle applications | - | • | • |
| Smartphone replication with Apple CarPlay® / Android Auto™ by USB | - | • | - |
| Wireless smartphone replication with Apple CarPlay® / Android Auto™ | - | - | • |
| DIN radio with USB port | • | - | - |
| Front speakers (x2) | • | • | • |
| Rear speakers (x2) | • | • | • |
| Premium Audio Sound System with 2 tweeter speakers | - | - | • |
| Shark-fin antenna | - | • | • |
| Remote central locking | • | - | - |
| Smart access card with push-button start/stop | - | • | • |
| Steering wheel mounted controls | - | • | • |
| 12V power socket (front & rear) | • | • | • |
| SERVICE AND WARRANTY | | | |
| 2 Year / 30 000km service plan | • | • | • |
| 5 Year / 150 000km mechanical warranty | • | • | • |
| 6 Year anti-corrosion warranty | • | • | • |
| 15 000km service intervals | • | • | • |

Standard · Not Available - Optional ◦



accessories



01 Front Grille Chrome Garnish

02 Front skid plate

Add to the Kiger's impressive stance while offering protection on rough roads.

03 Front bumper chrome

accessories



04



05



06



07

04 Roof carrier

05 Body side cladding with chrome garnish

Protects your vehicle from minor scratches and dings while enhancing its profile.

06 DRL chrome insert

07 Alloy wheel inserts

Personalise alloy wheels by adding colour accents based on your style statement.

08 Tail gate chrome finisher

09 Rear boot cladding

Add more muscle and an elegant look to the rear styling of the Kiger.



08



09

accessories



10



11



12



13



14



14



15



16

10 Rear bumper chrome garnish

11 Car cover

12 Mud flaps

Protects your car from dirt thrown into the air by the tyres.

13 Bumper corner protector chrome insert

14 Elevated luggage board

Smartly organise the boot storage area.

15 Armrest console organiser

Smartly organise the storage area.

16 Cabin carpet mats

Tailored to fit the contours of your Kiger. These stylish mats protect your original carpet from the wear and tear of daily use.

Actual accessories may vary from photographs shown and are subject to change without notice.

colour palette



ICE COOL WHITE
(NM)



MOONLIGHT SILVER
(MP)



CASPIAN BLUE
(MP)



HONEY YELLOW
(MP)

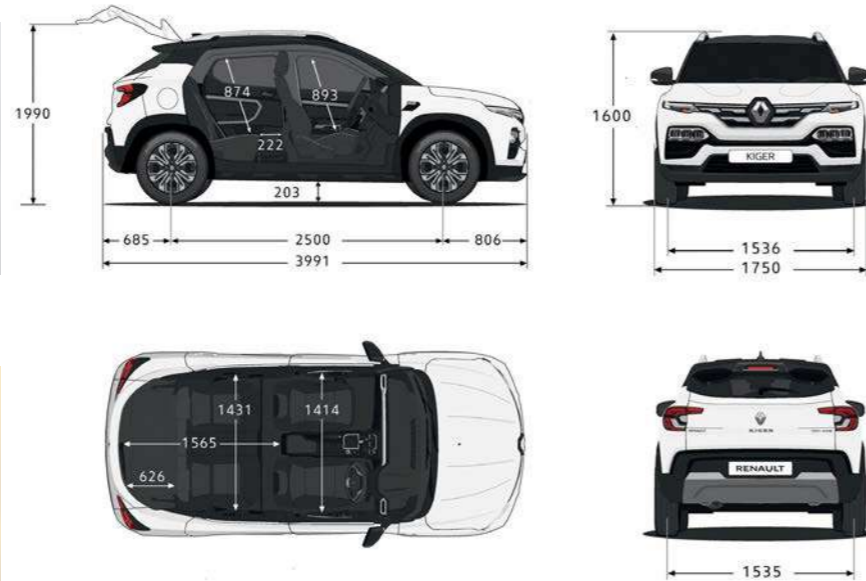


MAHOGANY BROWN
(MP)



RADIANT RED
(Dual-Tone Black roof)
(MP)

dimensions



RENAULT KIGER

| DIMENSIONS | |
|---|-------|
| Overall length of vehicle (mm) | 3 991 |
| Overall width of vehicle (mm) | 1 750 |
| Overall height including roof bars (mm) | 1 605 |
| Wheelbase (mm) | 2 500 |
| Track front (mm) | 1 536 |
| Track rear (mm) | 1 535 |
| Number of doors | 5 |
| Fuel tank capacity (L) | 40 |
| Ground clearance (mm) | 205 |
| Number of axles | 2 |
| Number of driving axles | 1 |
| Number of people | 5 |

Renault Care

we strive to provide you with the highest level of after sales service so you can continue to enjoy your Renault ownership journey

5 Year / 150 000km Warranty peace-of-mind comes standard

The Renault Warranty comes standard with every new vehicle, covering the costs of repair of any unexpected electronic or mechanical malfunctions, for a period of up to 5 years or 150 000km, whichever comes first.

Refer to the warranty booklet

Service / Maintenance Plans standard or tailor-made options are available to suit your needs

A Service Plan is a cost-effective way to cover your Renault's scheduled service programme, giving you full peace of mind for the duration of the Service Plan.

Purchase or upgrade your existing Service Plan to a comprehensive Maintenance Plan that not only covers the cost of your Renault scheduled service programme, but also covers the replacement, maintenance or repair of specific wear-and-tear items*.

The key benefits of a Renault Service Plan or Comprehensive Maintenance Plan are:

- 1. added value**
Service and Maintenance Plans are costed at preferential rates as well as offering protection from inflationary increases for the duration of the plan.
- 2. full peace of mind**
Only genuine parts are used.
- 3. Renault expertise**
Renault qualified technical personnel will attend to your vehicle.
- 4. protect your warranty**
All workmanship and parts warranted by Renault.
- 5. cost of wear & tear items covered** (Maintenance Plan only)
Items covered: Clutch, exhaust, globes & fuses, shock absorbers, drive belts, battery, wiper blades, brakes.

*T's & C's Apply. Warranty does not cover wear and tear items such as shock absorbers, brake pads, clutch, cam belt, etc.

Parts availability

Renault ranks amongst South Africa's motor industry leaders in affordable parts pricing. We strive to ensure an excellent level of parts availability at our Renault Dealerships.

Book a service online

Because your convenience matters to us, you can now book your service online at a dealer of your choice in a few easy steps. You could be eligible to qualify for vouchers and other rewards, by booking your service through our online portal, to make your experience that much more rewarding.

Go to www.renaultcarcare.co.za

24 hour roadside assistance

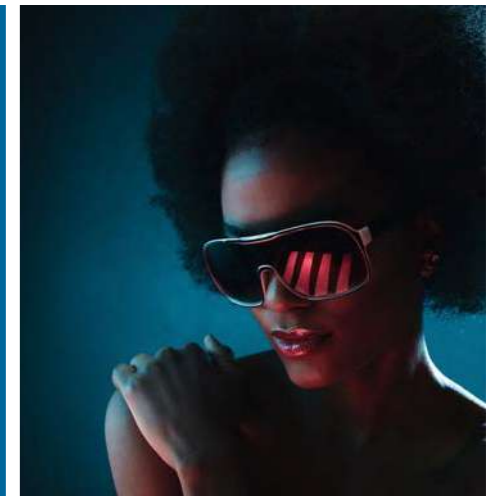
Whatever the emergency, we'll always be there. Because your personal safety is of utmost importance to us, help is one phone call away. Simply dial **0861 114 352** for assistance or for a team to be dispatched to you.

Our 24 hour Roadside Assistance Plan covers all new Renault vehicles for a period of 5 years or 150 000km with an option for extension.

contacts to remember

Customer Care
and Renault Assist
0861 114 352

Renault on the web
www.renault.co.za



Dual-Tone Black roof available on Zen & Intens Turbo models only.
NM: Clearcoat Opaque; MP: Metallic Paint